

June 2024

Hope Happenings



Dear Friends,
XXX
Grace, Peace, & Hope to all,
Pastor Carol

In This Issue

From the Pastor's Desk	Cover/Page 1
Moderator's Minute	2
Farewell, Lynn	2
Treasurer's Report	3
A WISE Congregation	4
The Green Sheet	5
Prayer List / Birthdays & Anniversaries....	6
Community Outreach	7
Monthly Calendar	last page

Hope Happenings is a monthly publication printed the first Sunday of the month and distributed electronically via MailChimp.

Deadline for submission for the next issue is the last Tuesday of the month at 1 PM.

Pastor: Reverend Carol Reynolds
Moderator: Ann Quale
Choir Director: Mary Hall
Organist/Accompanist: Cheryl Pfister
AV Manager: Beth Mitchell



Hope United Church of Christ
141 South 12th Avenue
Sturgeon Bay, WI 54235
(920) 743-2701 | hopechurchdc.org
hopeucc@hopechurchdc.org
facebook.com/HopeUCCDoorCounty

Moderator's Minute

One of the decisions that the congregation will be asked to make at our annual meeting on July 28 is if we shall adopt the WISE covenant. If adopted, Hope makes a commitment to be a WISE (Welcoming, Inclusive, Supportive, and Engaged) congregation for individuals with a myriad of mental health challenges. The first thing that came to my mind was people who live with serious mental illnesses and associated behaviors that are sometimes intimidating. Actually, our discussion and vote will send a message to many with whom we already are sharing pews. Depression and anxiety are common and often well hidden from the casual observer; the person appears fine, functioning, maybe even laughing during work, church, and trips to the grocery store but returns home and shuts down. They've spent all of their energy maintaining an 'I'm fine' persona, meeting external demands and expectations; they have nothing left for home. Others suffer in silence because they experienced trauma as a child, young adult, or more recently.

Becoming a WISE congregation means that we are open to learning about mental illness; want to provide a kinder, gentler worship experience; want to be a refuge from everyday demands. These folks are not only sitting in the pews with us, they are our friends, members of our family, our co-workers, and our neighbors. ("A WISE Congregation for Mental Health" can be found on page 4.) A dedicated group has been working on this project since Pastor Mary Jo Laabs, an interim minister, brought it to our attention. Please attend the adult forum at **9 AM** on **June 23** to learn about the WISE covenant.

I hope to see you there!

Ann Quale



Farewell & Best Wishes to Lynn

It is with mixed emotions that we announce the upcoming departure of Lynn Michelsen, who has played a crucial role at Hope as our Office Manager for the past three and a half years. While we are saddened to see her go, we are excited for the new opportunities that await her with her expanded role at Crossroads at Big Creek. Her last regular day will be Friday, May 31, but Lynn has graciously agreed to help us on a limited basis until we have someone new in place.

Lynn's warmth as a person drew people into the office. Throughout her time with us, Lynn has demonstrated dedication and professionalism, along with a positive outlook that made all feel welcome. Her contributions have been many, including organizing and streamlining office operations, putting her expert touch on all our church publications, and being instrumental in getting our new church website launched.

We want to express our heartfelt thanks and best wishes. Thank you, Lynn. You will be greatly missed! Please come to a farewell party for Lynn during Coffee Hour on **Sunday, June 23**, and let her know how much we appreciate all she did for us!

Hope UCC Personnel Committee



INTERGENERATIONAL

BONFIRE

& HOTDOG ROAST

Food | Games | Conversation

THURSDAY, JUNE 20 at 5 PM

Future Dates:
July 17
August 21

RSVP by June 16 by signing up in the entry or contacting the church office.

HOPE
UNITED CHURCH OF CHRIST
141 S. 12th Ave., Sturgeon Bay

Treasurer’s Report April 2024

	Contributions	Expenses	Surplus/ (Deficit)
April 2024	\$17,980	\$14,805	\$3,175
YTD (9 months)	\$178,053	\$173,838	\$4,215

Dear Hope Church Members and Friends,

April income was very strong, entirely from contributions. Expenses for the month were slightly below last month and below last year. The result was a surplus for the month in excess of \$3,000.

Year to date, income remains well above both last year and the current fiscal year budget. Expenses are below last year. The YTD net income is strong.

The proposed budget for fiscal year 24-25 has been supported by Trustees and Council. It will be presented to the congregation in July.

Gale Whitson-Schmidt, Treasurer
Eric Vollrath, Associate Treasurer

Grief Support Group

The monthly support group continues at **12:30 PM on Thursday, June 13**. Meet in the library at Hope.

Please call Carol Moellenberndt at 920-743-3476 if you are attending for the first time or if you have any questions.

Coffee with Carol

Saturdays from 2:00 to 3:00 PM at 5th and Jefferson Coffee House (232 N 5th Avenue, Sturgeon Bay)

Pastor Carol welcomes all to join and especially hopes this devoted space makes it easier for those who work during the week to connect in person.

There will be no Coffee with Carol on **June 8 or 15**.

Hope Happenings

June Adult Forums

The Racial Justice Committee of Mission & Action is excited to announce an opportunity for personal and congregational growth. We would like to partner with QUAD DEI Consultants to facilitate a comprehensive assessment that fosters greater understanding, empathy, and inclusivity. Participants will explore many dimensions of identity, including race, ethnicity, age, Vets, gender identity, sexual orientation, LGBTQIA+, etc. This process will give us ways to bridge differences and normalize how to talk about Diversity, Equity, Inclusion. We hope you feel called to partake in this self-discovery and unity-building process for the Church. The forum on **Sunday, June 9 at 9 AM** will be an opportunity to learn about this process and ask questions about how it will work.

Learn more about the WISE Covenant during our **June 23** forum.

Benevolent Broadcast

Please continue to collect your Tadych's MarketPlace receipts (a year old or less) and bring them to church. The collection box is outside the church office or you can drop them in the mailbox.

Thank you, all!

The Benevolent Committee,
*Nancy Feld, Penny Beerntsen ,
Maetta Chase, Jeanne Harris,
Marsie Hartman ,
Suzanne Holvenstot,
Judy Proctor, Joan Shiels,
Karen Wilcox & Joyce Williams*



Join the Juliets

Join the Juliets for Lunch. We meet once a month to socialize at **11:30 AM on the fourth Friday, June 28**. Location TBD so stay tuned!

Email June Kirali at juniek2@att.net for reminders, updates, or questions or call 920-241-2261. Join us every month or when you can.

A WISE Congregation for Mental Health

We, the people of Hope United Church of Christ of Sturgeon Bay, Wisconsin, know we are graced by the gifts, stories, and experiences of all our members, including those living with mental health challenges such as, but not limited to, mental illnesses, brain disorders, addictions, emotional challenges, and trauma. We know these challenges can profoundly disturb our feelings, thoughts, and behavior. We care about the whole person: body, heart, mind, and soul. We affirm the deep and constant movement of God's Holy Spirit, seeking to bring us to the fullness of life. We believe that all people are beloved by God, and if a person has a mental health challenge, that person has a right to be seen as a person first. Jesus told us, "Love your neighbor as yourself." He made no distinction between various members of society. He did not show any partiality. He included all people in this commandment. Sometimes individuals with mental health challenges feel cut off from God and do not feel included. It is our calling to communicate to all individuals that God loves all of us equally, even when we do not feel the love of the Holy Spirit in our lives. People with mental health challenges have gifts to be offered in our faith community, and we want everyone to feel fully welcomed, included, supported, and engaged in the life, work, and leadership of our church.

We, Hope United Church of Christ, Sturgeon Bay, Wisconsin, vote to continue to be a **WELCOMING, INCLUSIVE, SUPPORTIVE, and ENGAGED (WISE)** congregation for mental health.

WE PLEDGE TO CREATE A WELCOMING ENVIRONMENT FOR PEOPLE WITH MENTAL HEALTH CHALLENGES AND THEIR FAMILIES BY

- *educating ourselves and offering educational opportunities to help our whole congregation understand the issues surrounding mental health challenges
- *reducing social stigma and examining our own attitudes and preconceived notions about mental health challenges and by confronting our own ingrained stigma
- *actively welcoming those with mental health challenges into our faith community and providing a safe environment in which people can tell their stories and share their journeys

WE PLEDGE TO INCLUDE PEOPLE WITH MENTAL HEALTH CHALLENGES IN THE LIFE, WORK, AND LEADERSHIP OF THE CONGREGATION BY

- *recruiting, nominating, and supporting persons with mental health challenges to serve on committees and in leadership, pastoral, and staff positions within the congregation

WE PLEDGE TO SUPPORT PEOPLE IN OUR CONGREGATION WHO HAVE MENTAL HEALTH CHALLENGES AND THEIR FAMILIES BY

- *reaching out to those suffering from mental health challenges the same way we reach out to those living with other illnesses
- *offering companionship and compassion for individuals and families living with mental health challenges

WE PLEDGE TO ENGAGE WITH OTHER ORGANIZATIONS THAT WORK AT THE INTERSECTION OF MENTAL HEALTH AND FAITH/SPIRITUALITY/RELIGION BY

- *welcoming and encouraging outside groups who deal with mental health challenges to use our church facilities
- *engaging with other organizations to find opportunities to be in shared mission, ministry, and advocacy together. This includes working with Hope Church's Mental Health Committee, the UCC Mental Health Network, and the UCC Disabilities Ministry

Seeking a part-time, year-round office manager. Minimum of 16 hours per week. Strong computer skills and the ability to learn new software are a must, along with knowledge of basic accounting, excellent communication skills, and the ability to maintain confidentiality. Hourly wage is commensurate with experience. Interested applicants should email hopeucc@hope-churchdc.org Subject – Personnel Committee.

For more information about our community of faith go to hopechurchdc.org or [Facebook.com/HopeUCCDoorCounty](https://www.facebook.com/HopeUCCDoorCounty).

"Gift of Years" Group Update

We will discuss "XXX" during the **June 27** discussion group at **4:15 PM** in Fellowship Hall.

Worship Volunteers Needed!
Please sign up in the entry.
Thank you!

The Green Sheet

Everything you wanted to know about recycling (but were afraid to ask).

Recycling Quicklinks

Where to Recycle: doorcountypulse.com/where-to-recycle-in-door-county

Sturgeon Bay Recycling Guide: recyclemoretricity.org/recycling-guide/, 920-832-5277

Plastics: plasticmakers.org

Batteries: dnr.wisconsin.gov/topic/recycling/batteries.html

Electronics: cybergreenllc.com, 920-246-7143

Compost: climatechangedoorcounty.com

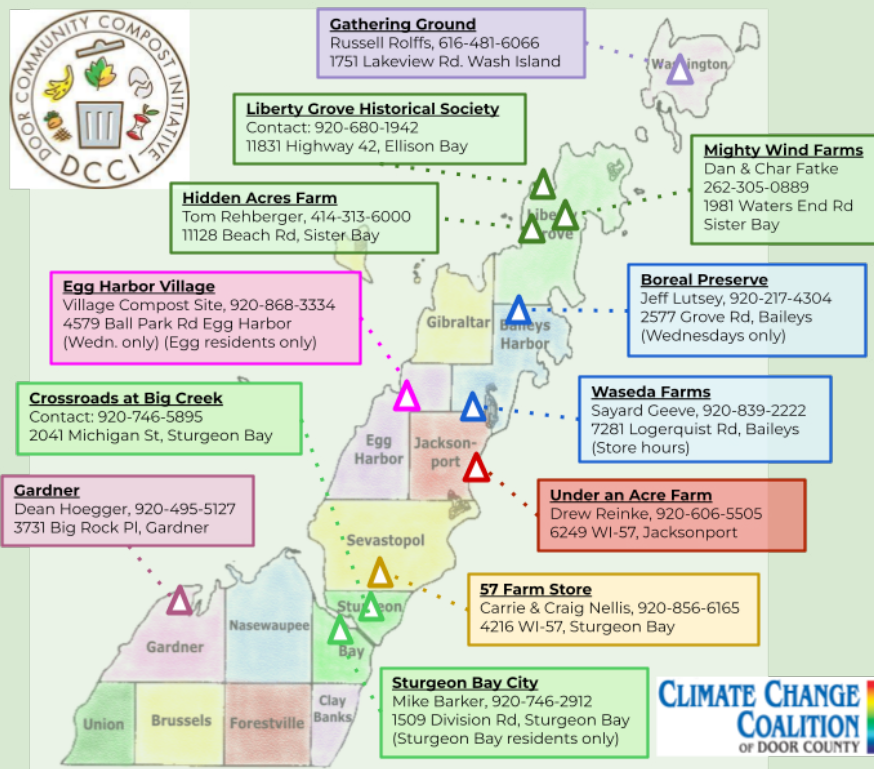


Aluminum Can Tabs

Several years ago, Pat Barlament initiated the call for saving and depositing your aluminum can tabs into the pitcher with the green lid. It is still located at the left side of the entrance to the Fellowship Hall with the collection bin for printer ink cartridges.

Pat was very active with the Daughters of the Nile (the women's arm of the Shriners). As a project that she felt strongly about, the funds earned from the recycled aluminum tabs were regularly turned over to the Shriners Hospitals for Children. Jerry Bloom Stephenson continued this project and we turn the donations into cash that is turned in to the Daughters of the Nile in memory of Pat. They use these funds to purchase things like school supplies, blankets, and toys for children undergoing surgery and rehabilitation. The hospital departments also provide wish lists, which the Daughters of the Nile attempt to fill as much as possible.

Please consider collecting can tabs for this worthy cause. Thank you!



Please help us grow this community composting network!

1. This network is small-scale, just getting started, and for neighbors & residents
2. Call these possible compost deposit sites before visiting please, to confirm they have space and can accept your food scraps
3. Do you know of additional food scrap deposit sites? Let us know please!



Recycle and Order Inkjet Cartridges through Planet Green

Do you have empty printer cartridges sitting around your house that you would like to recycle? Would you like to help the church? Your printer cartridges may be sent in. The money that is received for them helps fund the Pastor's Emergency Fund.

Please put them in a plastic bag and drop them off at the church or at Ricki Mitchell's house. You may leave them on the porch either place. Ricki lives next to Pine Crest across from the Cinema at 1239 N. 18th Ave. Please do NOT leave cell phones, toner cartridges, or alkaline batteries!

To order recycled printer cartridges, go to planetgreen.com and use our organization program code 28367 and coupon code PGR20.

Call Ricki at 920-473-4139 with questions or for more details.

Prayer List

- Jana Mitchell

Anna

The Bender Family

Brenda Veldboom

Adrian “Ade” Webber

David Menke

Janet Arendt

Ann Gancarcik

George Weis

Sammie Nelson

Alexa Kaine

Mark Dallner

Amelia B

Don J

Vivian G

Peter

Pam (Pastor Carol’s cousin)

LGBTQ+ youth & adults everywhere
- Yvonne Siira & Family

Joan Gancarcik

Char Shinktgen

Karen Ebbeson

Janice McMahon

Anna Herdina

Gary Edler

Gracyn (Vicki Hollenbeck’s granddaughter)

Hugh Allen

Marty Stockwell

Pat Ehlers

Adam H

Kathy B

Bev Lisle

Pam (Tom Minahan’s sister)

Sasha H

Bill Skadden

Victims and survivors of gun violence

Churches & Pastors who are being persecuted in Russia

The people of and from Ukraine, Israel, and Gaza

Children who are missing or in harm’s way

...And especially the family and friends of

Peggy Nelson, Catherine Farrell, Lee Vanden Heuvel, John Ohde,

Jeanne McInroy, Chuck Willhite, Kenneth Coogle,

Lois Shaw, Bunny Schram, Doug Kerkman, Winifred Recupero,

Doris Kniffin, Mike Burke, Linda (Scott Hansen’s mom),

Kathleen (Joe Mitchell’s mom), and Thelma Walker.

Happy Birthday!

- June 4

Carol Weis
- 7

June Kirali
- 9

Jean Severson
- 10

DeeDee Brauer

and Cheryl Pfister
- 21

Rosemary Stuebi
- 28

Sue MacLean
- 29

Shawn Conard

Happy Anniversary!

- June 5

Richard & Peggy Feyen
- 19

Jim & Karen Ebbeson

and Mary & Andy Hall
- 20

Tom & Claire Minahan



Please contact the church office to update the birthday / anniversary list or the prayer list with your joy or concern.

Community Outreach

Hymn Sing

Sunday, June 2 at 6 PM
Friends Community Church
204 W. Maple, Sturgeon Bay
Celebrate the great music of our faith. All are welcome!

Annual Fish Boil

Friday, June 7 from 5-6:30 PM
Hainesville Lutheran Church
Call Evelyn at 920-743-8548 before May 31 for tickets (\$18/each).

Prevent Suicide Brat Fry Fundraiser

Thursday, June 13 from 10:30 AM -1:30 PM.
Marchant's
Green Bay Road, Sturgeon Bay

Open Door Pride Festival

Saturday, June 29 from 10 AM-5 PM
Martin Park

Community Dinner

Served on the 1st/3rd/5th Thursdays of each month
Prince of Peace Church
1756 Michigan St – Sturgeon Bay
If you or somebody you know would benefit from a warm meal
or just being with others in a casual atmosphere,
sign up here <http://bit.ly/ComDin>

